

Phoenix Area Indian Health Service Master Plan and Health Care Facilities Update



**Indian Health Service - Phoenix Area
Tribal Consultation & Urban Confer Meeting**

IHS Director's Listening Session

September 4-6,

2019

Scottsdale,

Arizona

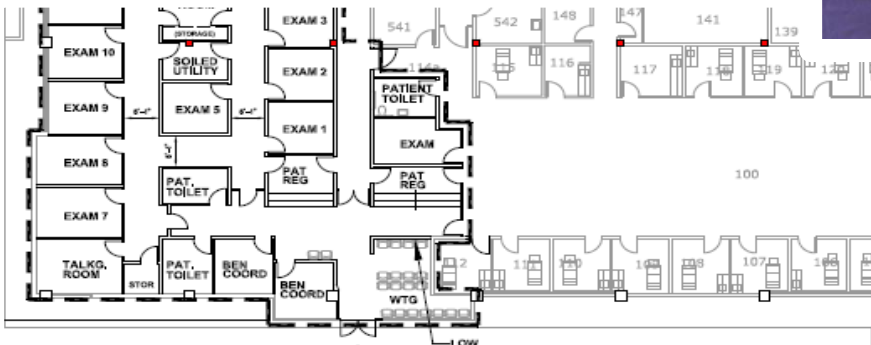
POPULATION / DATA DRIVEN



PATIENTS / PROVIDERS



DESIGN / CONSTRUCTION

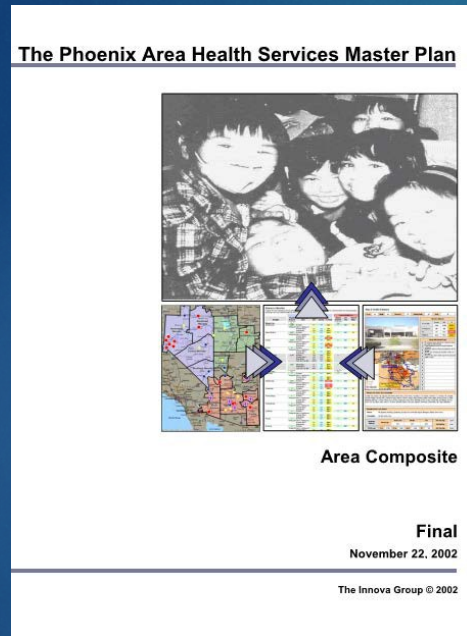


Facilities Planning – Phoenix Area IHS – OEHE

FEEDBACK FROM FROM 2018 TRIBAL CONSULTATION

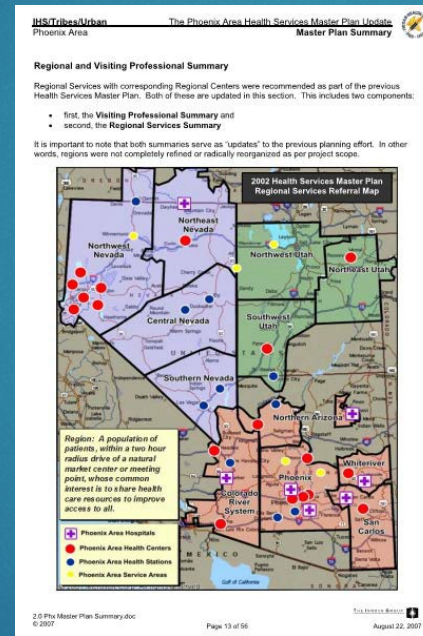
- Where will we get funding for the Phoenix Area Master Plan and the PIMC planning?
- We need a better understanding of how the process works?
- Who will get to participate in the Master Planning process?
- How long does it take to get through the process and get funding for a new facility?
- What are the funding sources for new facilities?

Previous Planning



Health Services
Master Plan
November 2002

Future Planning



Health Services
Master Plan-Update
August 2007

- Detailed Master Plan
- Immediate Needs
- Major Needs
- Ongoing Projects
- Priority Setting



2019-2020 Health Services Master Planning Effort



Why ?



Present Health Care Facilities Construction Priority Rankings March 2019



Health Care Facilities Construction

Inpatient:

PIMC Health System, AZ,
PIMC Northeast ACC³
PIMC Central Hospital &
ACC¹
Whiteriver, AZ¹
Gallup, NM¹

Outpatient:

Rapid City, SD²
Dilkon, AZ³
Alamo Navajo, NM¹
Pueblo Pintado, NM¹
Bodaway-Coppermine, AZ¹
Albuquerque Heath System, NM,
Albuquerque West¹
Albuquerque Central¹
Sells, AZ¹

Notes:

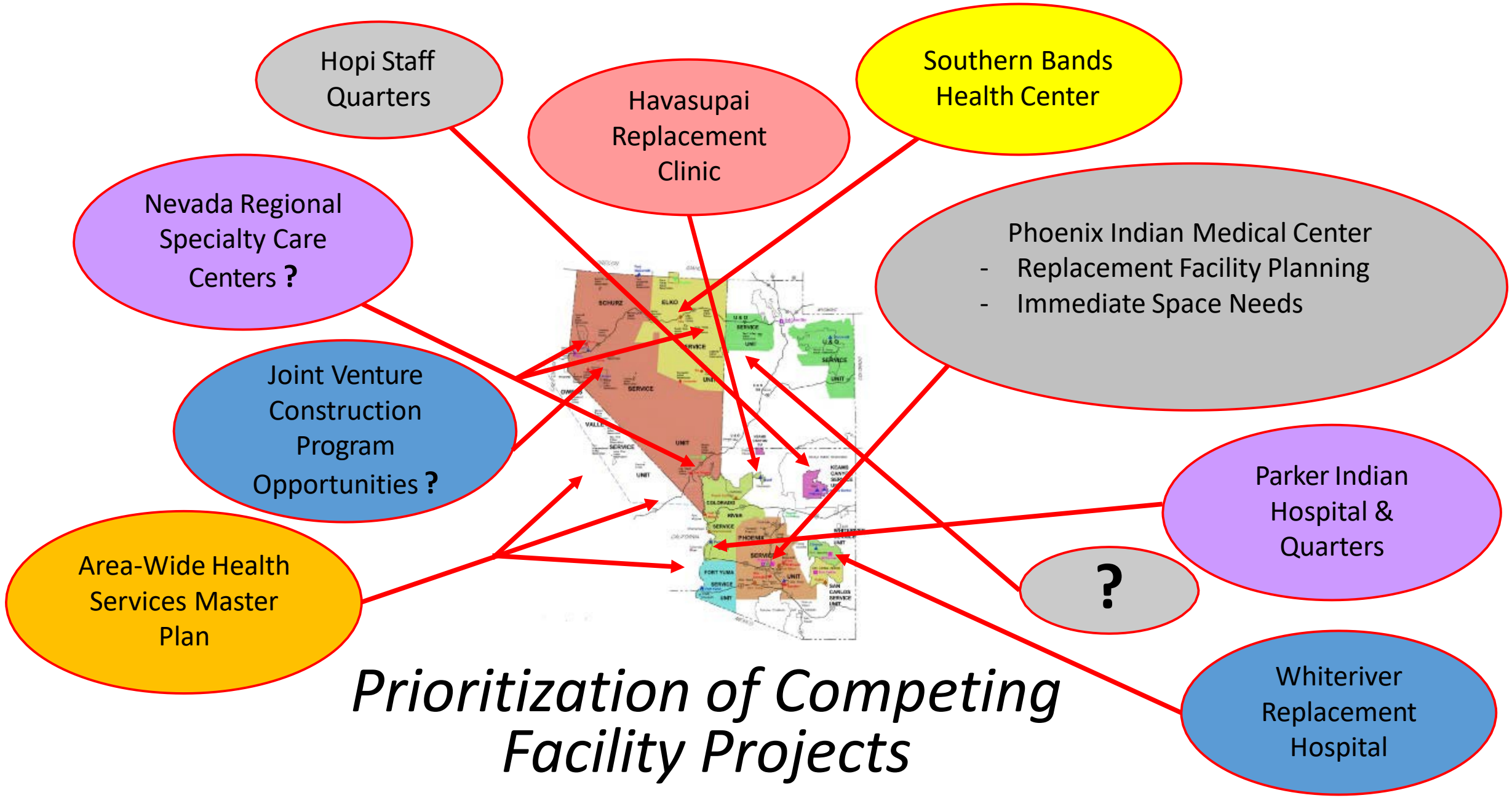
- 1 - Planning
- 2 - Design
- 3 - Construction

AI / AN HEALTH DISPARITIES

- Lower life expectancy and disproportionate disease burden
- Inadequate education, disproportionate poverty, discrimination in the delivery of health services, adverse socio-economic conditions
- Heart Disease, Liver Disease, Diabetes, Malignant Neoplasm, Respiratory and Unintentional Injuries
- Alcohol, Drugs, Unintentional Injuries, Assault, Homicide and Suicide

Facilities to Combat these Health Disparities

- Inadequate Healthcare Facilities and Staff Quarters
- Developing facilities planned to function as a Patient Centered Medical Home



Prioritization of Competing Facility Projects

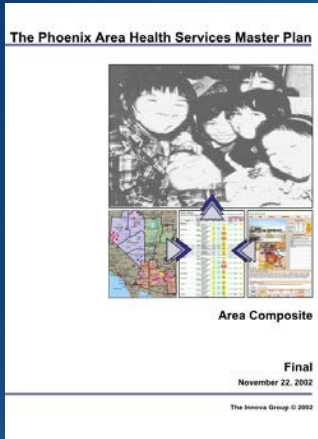


2019-2020 Health Services Master Planning

What is it ?

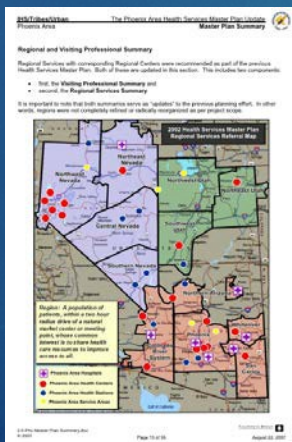


Previous Master Plans



Health Services Master Plan November 2002

- Master Plan
 - Each individual Primary Service Area, Regional and Area Delivery plans
- Regional Plan
 - Visiting Professional Summary Plan
 - Contract Health Summary
 - Direct Care Services Distribution Plan
- Master Plan Priorities



Health Services Master Plan- Update August 2007

- User Population Summary
- On-Site Service Summary
- Regional & VP Discussion
- Contract Health Summary
- Staffing Summary
- Space Summary
- Priorities



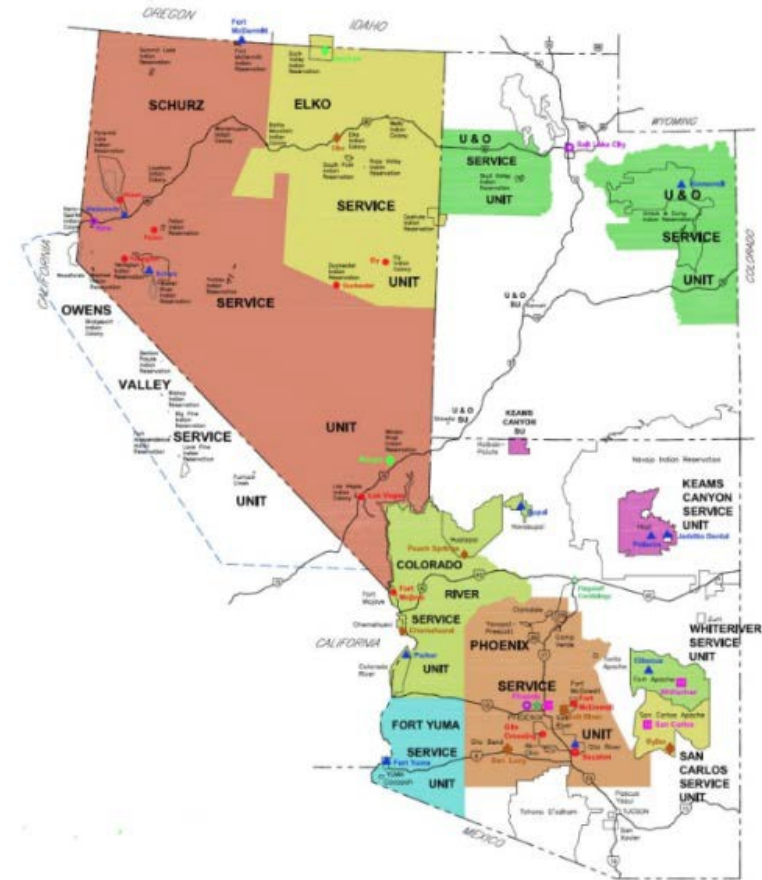
***2019-2020 Health Services
Master Planning Effort***

What's in it for Phoenix Area Tribes?

Managing Population Growth & Projected Growth

Phoenix Area Indian Health Service Active Users by Service Unit (FY2003 - FY2017)

Service Unit	2003	2007	2017
Colorado River	7,559	8,163	9,387
Duck Valley	1,241	1,234	1,477
Elko	2,442	2,680	4,456
Fort Yuma	3,650	3,749	4,279
Gila River	19,768	23,071	30,185
Keams Canyon	6,073	6,144	6,550
Phoenix	57,623	62,841	72,028
San Carlos	11,282	11,461	12,871
Schurz	12,745	14,193	15,760
Uintah & Ouray	4,903	4,595	4,857
Whiteriver	14,870	15,476	16,915
Total Phx Area	142,156	153,607	178,765



- 11,451 Active User Growth (2003 – 2007)
- 25,158 Active User Growth (2007 – 2017)
- 36,609 Active User Growth (2003 – 2017)

Facilities Opportunities

- Expansions
- Renovations
- New Construction
- Joint Venture Construction Program (JVCP)
- Small Ambulatory Grants Program (SAP)
- Regional Specialty Care Facility Development

Nevada Skies Youth Wellness Center
Wadsworth Nevada



Improve on Successes of the 2002 & 2007 Master Plans

- **Construction of New Facilities & Renovations**
 - Reno Sparks Tribal Health Center
 - Komatke Health Center/GRHC
 - PIMC Outpatient Clinics
 - Whiteriver Specialty Care Center
 - San Carlos Health Center
 - Red Tail Hawk Health Center/GRHC (SEACC)
 - Ft. Yuma Health Center

- **Planning & Design**
 - Whiteriver Indian Hospital – PJD/POR Submitted to HQ for Review
 - Havasupai Clinic Replacement Facility
 - Hopi Health Care Facility Renovation

- **Construction**
 - Northeast Ambulatory Care Center (NEACC)
 - Hopi Staff Quarters (Keams Canyon)

Hopi Health Care Center Quarters Project
Keams Canyon, AZ



Improve/Reduce Lengthy Project Durations

Projects	Milestone	Completed	Approx. Project Span
<ul style="list-style-type: none"> San Carlos Indian Hospital 	<ul style="list-style-type: none"> - PJD/POR - Design - Opening 	2005 2009-10 2015	TOTAL: ± 10 Years
<ul style="list-style-type: none"> Red Tail Hawk (SEACC) 	<ul style="list-style-type: none"> - PJD/POR - Design - Opening 	2008 2010 2018	TOTAL: ± 10 Years
<ul style="list-style-type: none"> Ft Yuma Health Center 	<ul style="list-style-type: none"> - PJD/POR - Design - Opening 	2007 2010 2018	TOTAL: ± 11 Years
<ul style="list-style-type: none"> Whiteriver Indian Hospital 	<ul style="list-style-type: none"> - PJD/POR - Design - Opening 	2002 (Draft) 2019-21 ? (Estimated) 2025 ? (Est.)	TOTAL: 23+ Years ? (Est.)

San Carlos Apache Healthcare Corporation
Peridot, AZ



San Carlos Healthcare Corporation Quarters
Peridot, AZ



Hau'pal (Red Tail Hawk)
Chandler, AZ



Ft. Yuma Health Care Center
Winterhaven, CA



Current Facility Planning Projects

CURRENT PROJECTS:

PJD/POR Documents for Healthcare Facilities:

- **Havasupai Clinic:** Replacement Facility
- **Whiteriver Indian Hospital:** Replacement Facility
- **Phoenix Indian Medical Center (PIMC):** Replacement Facility

PJDQ/PORQ Documents for Staff Quarters

- **Havasupai Clinic:** Replacement Quarters
- **Parker Indian Hospital:** New Quarters and Demolition
- **Whiteriver Indian Hospital:** New Quarters Units (2 sites)

Design & Construction Coordination:

- **Havasupai Clinic:** Replacement Facility
- **Northeast Ambulatory Care Center:** Salt River Pima-Maricopa Indian Comm. (638)

Future Facility Planning Projects

FUTURE PROJECTS:

Master Planning:

- **Phoenix Area Health Services Master Plan Update**

Facilities & Staff Quarters Planning:

- ?
- ?

- Increase in Medical Services
- Increase in Staffing Need
- Increase in Medical Facility Size
- Increase in Staff Quarters Need
 - Recruitment
 - Retention

***Increases Staff
Quarters Needs
& Funding***



Michael Welch
Associate Director
Office of Environmental Health and Engineering
602-364-5059
Michael.welch@ihs.gov

THANK YOU